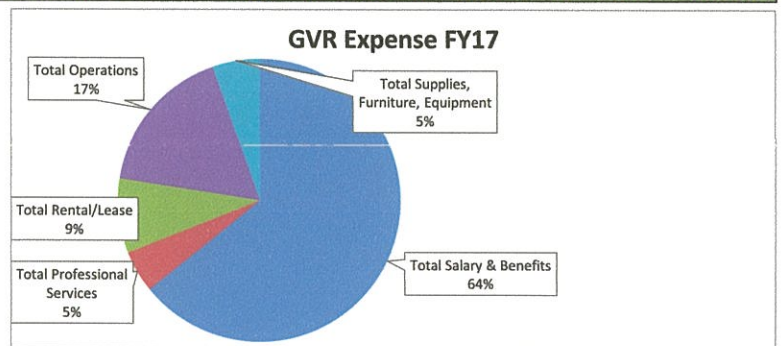
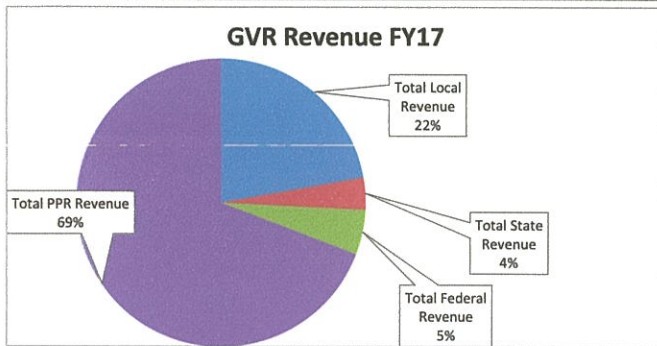


SOAR Charter School

FY17 Budget with FY13/14/15/16 Actuals

REVENUES	Year/FTE							
	FY13 Act/363	FY14 Act/438	FY15 Act/439	FY16 Act/451	FY17 Appr'd/466	FY17 Draft/466	FY17 Diff	
Total Local Revenue	1,047,014	1,029,716	871,632	792,098	747,898	1,055,727	307,829	
Total State Revenue	62,777	50,601	136,213	175,489	170,060	170,118	58	
Total Federal Revenue	217,980	203,191	199,057	207,000	254,427	239,370	-15,057	
Total PPR Revenue	2,424,334	3,019,852	3,196,220	3,211,618	3,298,194	3,291,418	-6,776	
Total Revenue	3,752,105	4,303,360	4,403,121	4,386,205	4,470,579	4,756,634	286,054	
EXPENSES								
Total Salary & Benefits	2,117,819	2,665,482	2,704,999	2,744,499	2,925,964	2,886,891	-39,073	
Total Professional Services	87,926	110,128	186,797	227,286	220,749	215,324	-5,425	
Total Rental/Lease	279,742	351,629	370,953	369,935	382,890	383,667	777	
Total Operations	616,983	613,157	724,392	706,682	711,494	771,184	59,690	
Total Supplies, Furniture, Equipment	321,585	364,627	242,519	217,465	215,206	243,885	28,679	
Total Expenses	3,424,055	4,105,023	4,229,659	4,265,866	4,456,303	4,500,951	44,648	
Net Income/(Loss)	328,051	198,337	173,462	120,338	14,276	255,682	241,406	
Total Other Uses of Funds	62,495	128	1,472	3,028	0	100,000	100,000	
Net Income less Other Uses of Funds	265,556	198,210	171,990	117,310	14,276	155,682	141,406	
Ending Fund Balance	558,317	483,061	469,247	267,152	281,428	515,179	241,406	



Sue Saon 4/14/17