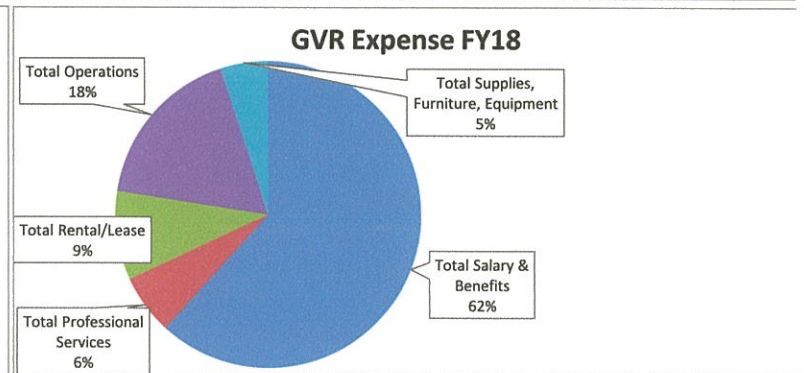
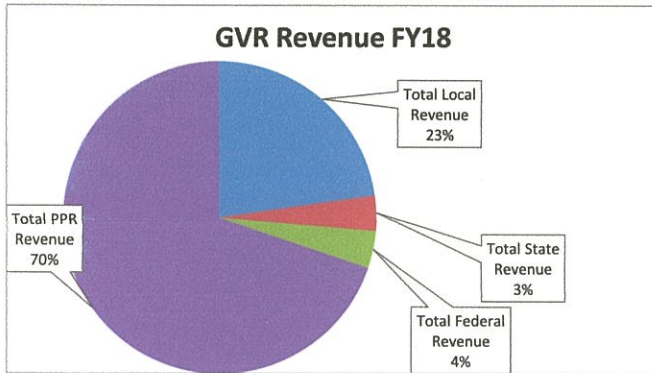


SOAR Charter School

FY17/FY18 Budgets with FY14/15/16 Actuals

REVENUES	Year/FTE					
	FY14 Act/438	FY15 Act/439	FY16 Act/427	FY17 Budget/466	FY18 Draft/464	FY18 Diff
Total Local Revenue	1,029,716	871,632	792,098	747,898	1,060,478	312,580
Total State Revenue	50,601	136,213	175,489	170,060	170,060	0
Total Federal Revenue	203,191	199,057	207,000	254,427	180,137	-74,290
Total PPR Revenue	3,019,852	3,196,220	3,211,618	3,298,194	3,259,174	-39,020
Total Revenue	4,303,360	4,403,121	4,386,205	4,470,579	4,669,849	199,269
EXPENSES						
Total Salary & Benefits	2,665,482	2,704,999	2,744,499	2,925,964	2,531,809	-394,155
Total Professional Services	110,128	186,797	227,286	220,749	258,546	37,797
Total Rental/Lease	351,629	370,953	369,935	382,890	385,596	2,706
Total Operations	613,153	724,391	706,681	711,494	718,630	7,136
Total Supplies, Furniture, Equipment	364,627	242,519	217,466	215,206	206,765	-8,442
Total Expenses	4,105,018	4,229,659	4,265,867	4,456,303	4,101,345	-354,958
Net Income/(Loss)	198,342	173,462	120,338	14,276	568,503	554,227
Total Other Uses of Funds	128	1,472	3,028	7,616	0	-7,616
Net Income less Other Uses of Funds	198,214	171,990	117,310	6,660	568,503	561,843
Ending Fund Balance	483,061	469,247	269,152	275,812	830,000	678,843



Suzanne Saxe 4/14/17