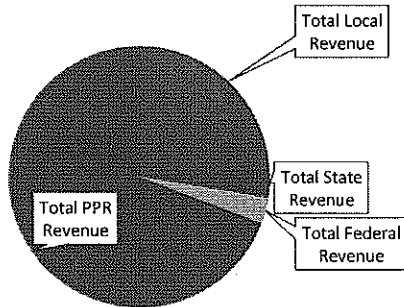


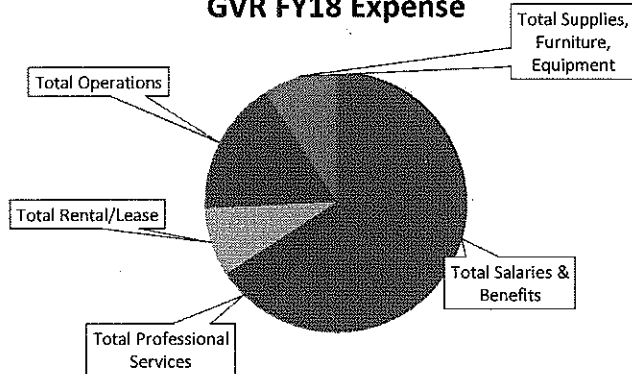
5 YEAR BUDGET

REVENUES	CDF	Description	Year/FTE				
			FY18/459	FY19/459	FY20/459	FY21/459	FY22/459
Total Local Revenue			1,156,276	1,124,668	1,252,235	1,221,075	1,116,707
Total State Revenue			230,674	229,326	228,022	226,760	225,540
Total Federal Revenue			180,385	168,252	83,415	82,836	82,270
Total PPR Revenue			3,214,978	3,214,978	3,214,978	3,214,978	3,214,978
Total Revenue			4,782,313	4,737,224	4,778,650	4,745,650	4,639,495
EXPENSES							
Total Salaries & Benefits			2,667,221	2,754,759	2,825,584	2,895,525	2,963,333
Total Professional Services			303,930	290,956	290,956	290,956	290,956
Total Rental/Lease			381,479	393,777	397,962	397,497	402,147
Total Operations			752,596	667,472	673,016	682,957	689,060
Total Supplies, Furniture, Equipment			411,006	244,500	244,500	244,500	244,500
Total Expenses			4,516,231	4,351,464	4,432,018	4,511,435	4,589,996
Net Income/(Loss)			266,082	385,760	346,632	234,215	49,499
Total Other Uses of Funds			0	0	0	0	0
Net Income less Other Uses of Funds			266,082	385,760	346,632	234,215	49,499
Beginning Fund Balance			182,776				
Ending Fund Balance			448,859	385,760	346,632	234,215	49,499

GVR FY18 Revenue



GVR FY18 Expense

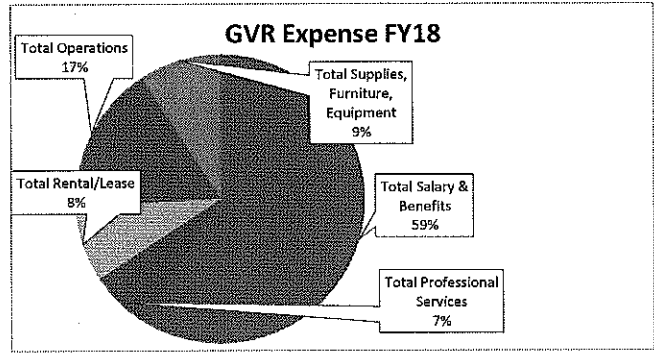
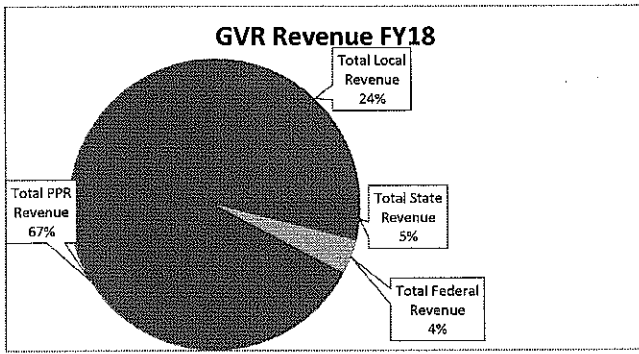


Liann Morrison
10/23/17

SOAR Charter School

FY18 Budgets with FY15/16/17 Actuals

REVENUES	Year/FTE					
	FY15 Act/439	FY16 Act/427	FY17 Act/466	FY18 Budget/462	FY18 Draft/459	FY18 Diff
Total Local Revenue	794,482	733,079	994,871	1,156,896	1,156,276	-620
Total State Revenue	213,363	234,508	256,893	175,060	230,674	55,614
Total Federal Revenue	199,057	207,000	224,207	180,385	180,385	0
Total PPR Revenue	3,196,220	3,211,618	3,291,931	3,244,039	3,214,978	-29,061
Total Revenue	4,403,121	4,386,205	4,767,902	4,756,376	4,782,313	25,937
EXPENSES						
Total Salary & Benefits	2,704,999	2,744,499	2,844,670	2,662,117	2,667,221	5,104
Total Professional Services	186,797	227,286	208,047	274,797	303,930	31,133
Total Rental/Lease	370,953	369,935	384,971	381,119	381,479	360
Total Operations	724,391	706,681	636,214	762,784	752,596	-10,188
Total Supplies, Furniture, Equipment	242,519	217,466	291,024	299,561	411,006	111,445
Total Expenses	4,229,659	4,265,867	4,364,926	4,379,676	4,515,232	137,556
Net Income/(Loss)	173,462	120,338	402,976	378,003	266,082	(111,921)
Total Other Uses of Funds	1,472	3,028	100,000	0	0	0
Net Income less Other Uses of Funds	171,990	117,310	302,976	378,003	266,082	(111,921)
Ending Fund Balance	469,247	267,152	517,976	593,003	481,082	(111,921)



Liane Morrison
10/23/17