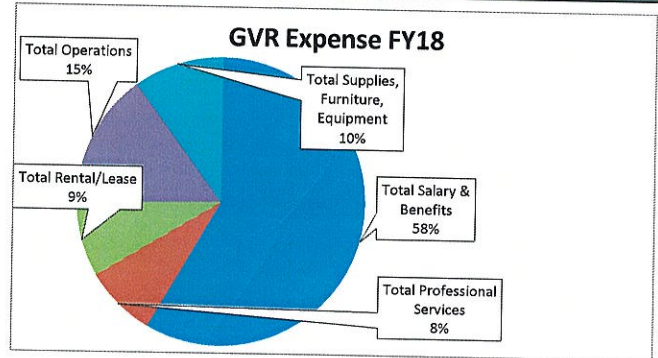
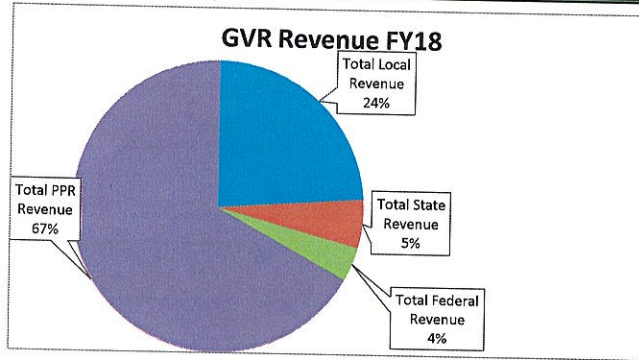


**SOAR Charter School**

**FY18 Budgets with FY15/16/17 Actuals**

REVENUES	Year/FTE					
	FY15 Act/439	FY16 Act/427	FY17 Act/466	FY18 Budget/459	FY18 Draft/459	FY18 Diff
Local Revenue						
Total Local Revenue						
Total State Revenue	794,482	733,079	994,871	1,156,277	1,205,739	49,462
Total Federal Revenue	213,363	234,508	256,893	230,674	266,939	36,265
Total PPR Revenue	199,057	207,000	224,207	180,385	189,481	9,096
Total Revenue	3,196,220	3,211,618	3,291,931	3,214,978	3,375,272	160,294
	4,403,121	4,386,205	4,767,902	4,782,313	5,037,431	255,117
EXPENSES						
Total Salary & Benefits						
Total Professional Services	2,704,999	2,744,499	2,844,670	2,667,220	2,656,666	-10,554
Total Rental/Lease	186,797	227,286	208,047	303,930	368,690	64,760
Total Operations	370,953	369,935	384,971	381,479	380,069	-1,410
Total Supplies, Furniture, Equipment	724,391	706,681	636,214	752,597	687,779	-64,818
Total Expenses	242,519	217,466	291,024	411,006	462,560	51,554
	4,229,659	4,265,867	4,364,926	4,516,230	4,555,763	39,531
Net Income/(Loss)						
	173,462	120,338	402,976	266,083	481,667	215,584
Total Other Uses of Funds						
	1,472	3,028	100,000	0	0	0
Net Income less Other Uses of Funds						
	171,990	117,310	302,976	266,083	481,667	215,584
Ending Fund Balance						
	469,247	267,152	517,976	481,083	696,667	215,584

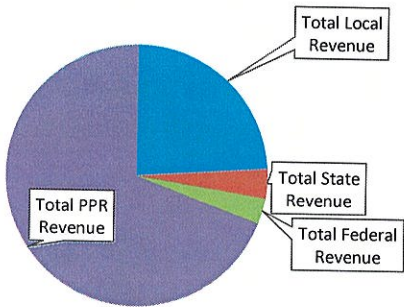


*Liane Morrison*  
Liane Morrison

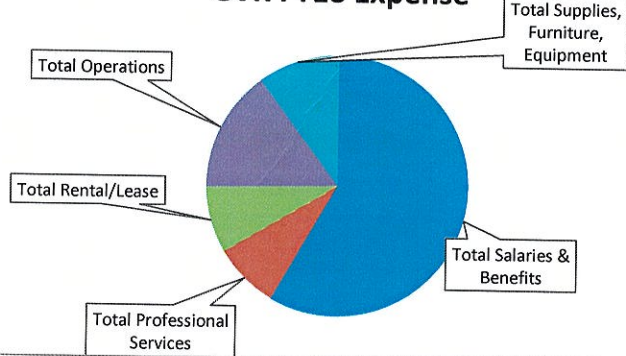
# 5 YEAR BUDGET

REVENUES	CDE	Description	Year/FTE					
			FY18/459	FY19/450	FY20/450	FY21/450	FY22/450	
Total Local Revenue								
Total State Revenue			1,205,739	1,347,098	1,398,006	1,406,454	1,245,129	
Total Federal Revenue			266,939	230,487	228,589	227,285	226,023	
Total PPR Revenue			189,481	172,725	135,289	80,395	79,877	
<b>Total Revenue</b>			<b>3,375,272</b>	<b>3,324,260</b>	<b>3,324,260</b>	<b>3,324,260</b>	<b>3,324,260</b>	<b>3,324,260</b>
EXPENSES								
Total Salaries & Benefits								
Total Professional Services			2,656,666	2,774,066	2,862,427	2,965,437	3,055,438	
Total Rental/Lease			368,690	280,734	280,734	280,734	280,734	
Total Operations			380,069	381,762	393,777	397,962	397,497	
Total Supplies, Furniture, Equipment			687,779	746,952	716,384	721,930	731,873	
<b>Total Expenses</b>			<b>4,555,763</b>	<b>4,526,388</b>	<b>4,537,284</b>	<b>4,658,705</b>	<b>4,716,804</b>	
<b>Net Income/(Loss)</b>			<b>481,667</b>	<b>548,182</b>	<b>548,859</b>	<b>379,688</b>	<b>158,485</b>	
Total Other Uses of Funds			0	0	0	0	0	
<b>Net Income less Other Uses of Funds</b>			<b>481,667</b>	<b>548,182</b>	<b>548,859</b>	<b>379,688</b>	<b>158,485</b>	
Beginning Fund Balance			182,776					
<b>Ending Fund Balance</b>			<b>664,444</b>	<b>548,182</b>	<b>548,859</b>	<b>379,688</b>	<b>158,485</b>	

**GVR FY18 Revenue**



**GVR FY18 Expense**



*Liane Morrison*

Liane Morrison