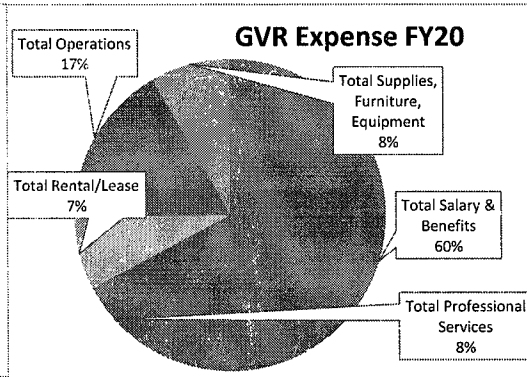
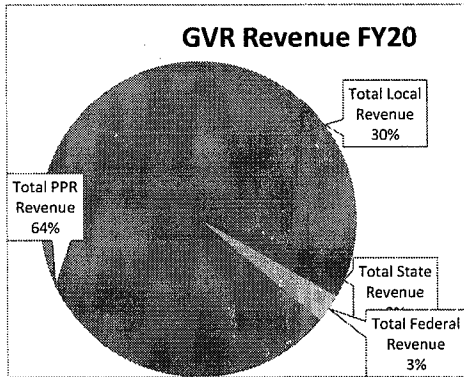


SOAR Charter School

FY20 Budget with FY16/17/18/19 Actuals

REVENUES	Year/FTE				FY20 Budget/435	FY20 Diff	
	FY16 Act/427	FY17 Act/466	FY18 Act/459	FY19 Act/447			
Total Local Revenue	733,079	994,871	1,204,654	1,582,651	1,775,259	192,608	
Total State Revenue	234,508	256,893	272,207	254,315	211,593	-42,721	
Total Federal Revenue	207,000	224,207	189,266	191,632	170,100	-21,533	
Total PPR Revenue	3,211,618	3,291,931	3,377,365	3,531,954	3,832,611	300,657	
Total Revenue	4,386,205	4,767,902	5,043,491	5,560,552	5,989,563	429,012	
EXPENSES							
Total Salary & Benefits	2,744,499	2,844,670	2,549,765	2,595,175	2,889,617	294,442	
Total Professional Services	227,286	208,047	375,674	390,054	373,707	-16,347	
Total Rental/Lease	369,935	384,971	380,176	374,856	366,041	-8,815	
Total Operations	706,681	636,214	630,179	717,054	820,617	103,562	
Total Supplies, Furniture, Equipment	217,466	291,024	457,758	527,326	400,216	-127,110	
Total Expenses	4,265,867	4,364,926	4,393,552	4,604,465	4,850,197	245,732	
Net Income/(Loss)	120,338	402,976	649,939	956,087	1,139,366	183,280	
Total Other Uses of Funds	3,028	100,000	0	0	0	0	
Net Income less Other Uses of Funds	117,310	302,976	649,939	956,087	1,139,366	183,280	
Ending Fund Balance	267,152	517,976	764,939	1,071,087	1,254,366	183,280	

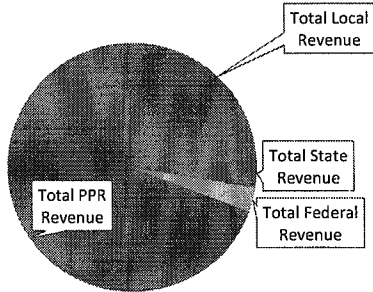


Liane Mowson 9/13/19

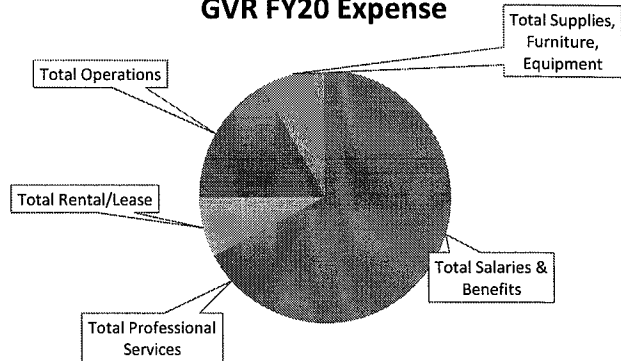
5 YEAR BUDGET

REVENUES	CDE	Description	Year/FTE				
			FY20/435	FY21/435	FY22/435	FY23/435	FY24/435
Total Local Revenue			1,775,259	2,004,591	2,146,133	2,205,907	2,190,290
Total State Revenue			211,593	206,247	203,199	200,211	197,283
Total Federal Revenue			170,100	142,123	139,465	137,072	134,919
Total PPR Revenue			3,832,611	3,832,611	3,832,611	3,832,611	3,832,611
Total Revenue			5,989,563	6,185,572	6,321,407	6,375,802	6,355,104
EXPENSES							
Total Salaries & Benefits			2,889,617	2,958,424	3,026,051	3,117,988	3,212,143
Total Professional Services			373,707	375,556	375,556	375,556	375,556
Total Rental/Lease			366,041	387,405	391,410	390,965	395,415
Total Operations			820,617	799,131	810,445	822,098	834,100
Total Supplies, Furniture, Equipment			400,216	400,327	409,947	393,647	400,000
Total Expenses			4,850,197	4,920,843	5,013,408	5,100,254	5,217,214
Net Income/(Loss)			1,139,366	1,264,729	1,307,999	1,275,548	1,137,889
Total Other Uses of Funds			0	0	0	0	0
Net Income less Other Uses of Funds			1,139,366	1,264,729	1,307,999	1,275,548	1,137,889
Beginning Fund Balance							
Ending Fund Balance			1,139,366	1,264,729	1,307,999	1,275,548	1,137,889

GVR FY20 Revenue



GVR FY20 Expense



Liane Morrison 9/13/19